

Flow and turbulence structure in a vertical slot-brush fish pass

Dr. Serhat Kucukali and Dr. Reinhard Hassinger

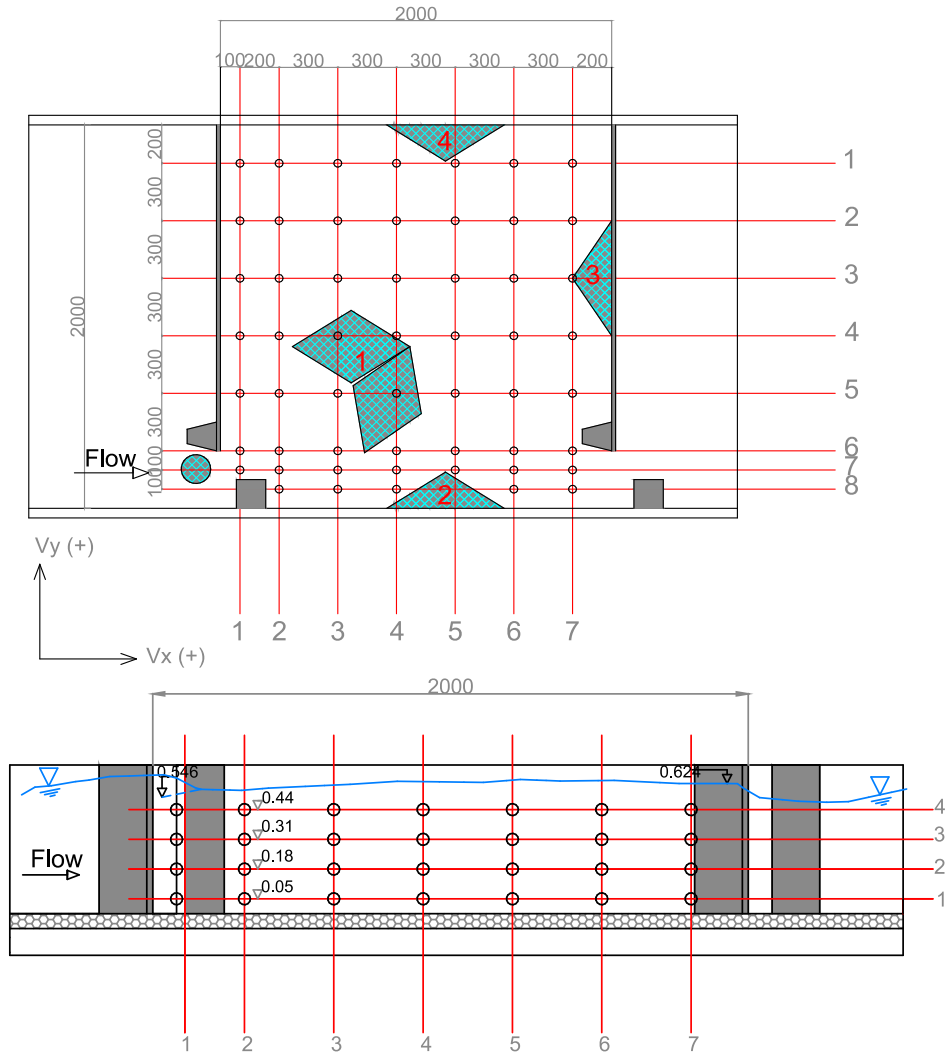


XXXVIII

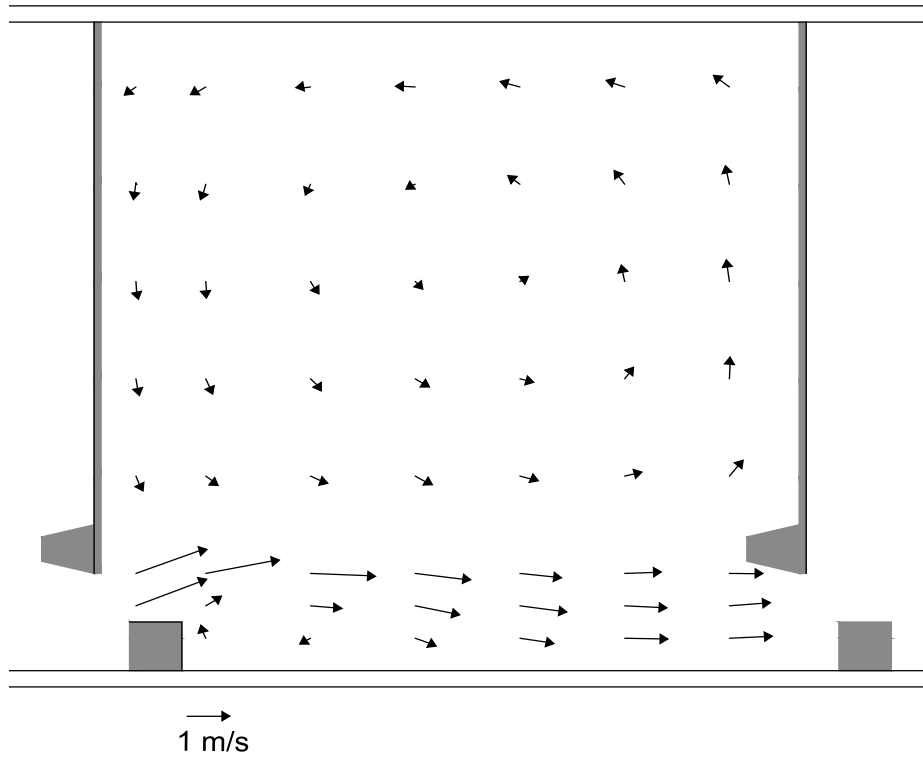
International School of Hydraulics

21 - 24 May 2019 • Łąck • Poland

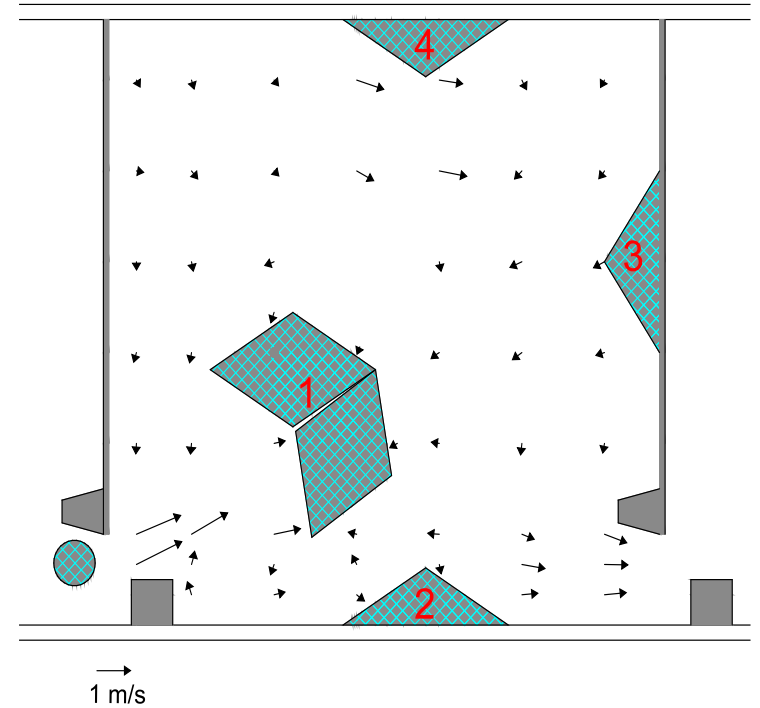
Physical Model



Flow Field at $z/d=0.32$



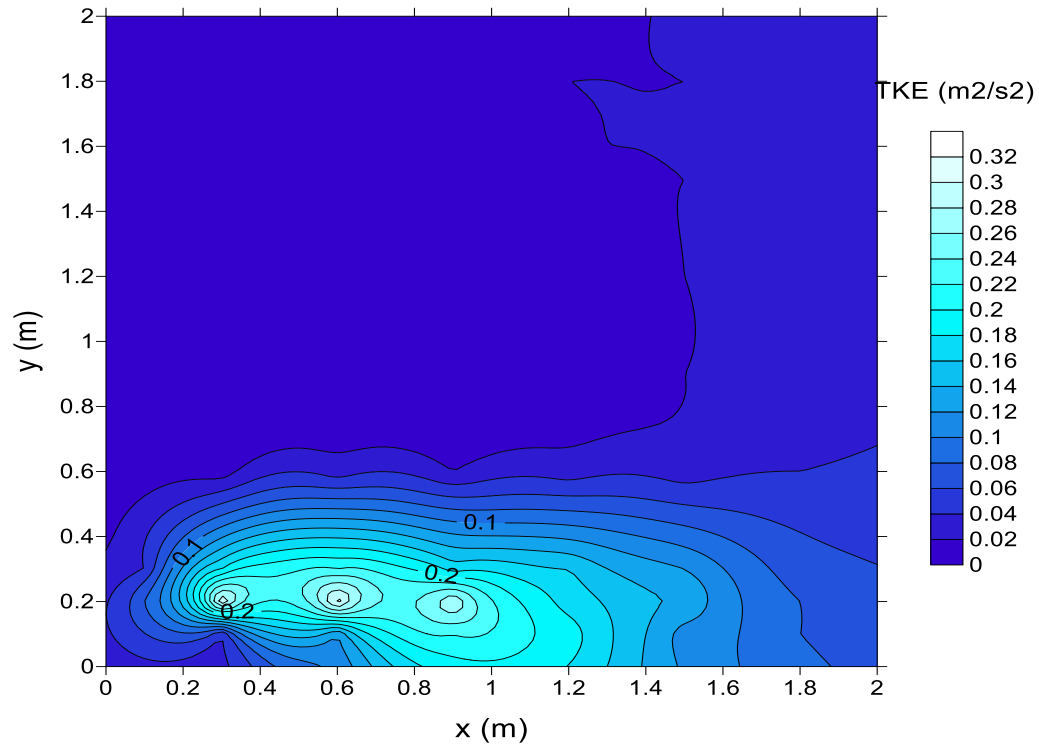
Without Bristles



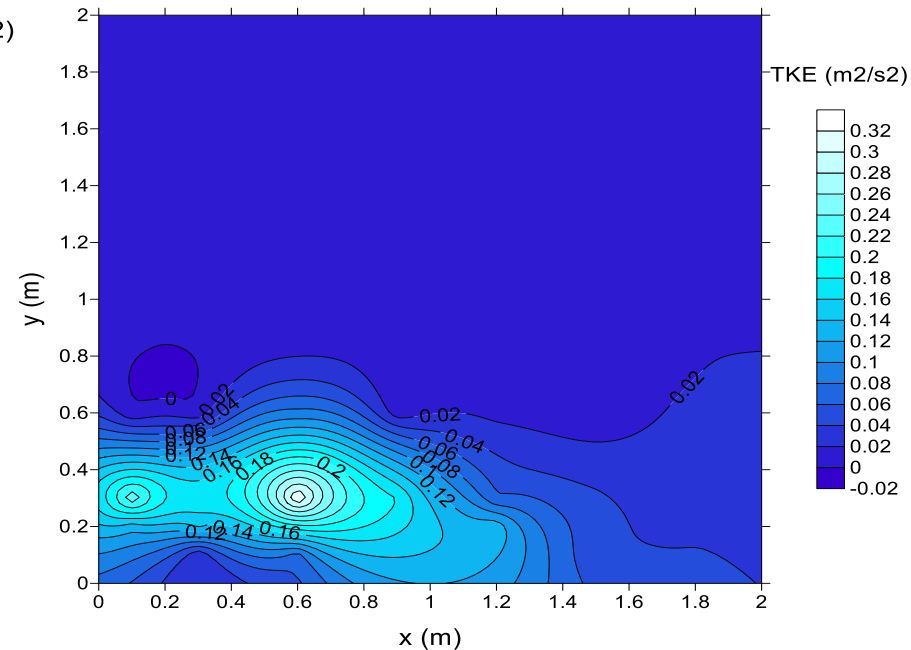
With Bristles

Turbulent Kinetic Energy Distribution

The flow-bristle interaction leads **17% reduction** in spatially averaged turbulence kinetic energy



Without Brushes



With Brushes

Pilot Project in Çataloluk, Turkey

